

Analysis of the Impact of Agricultural Production Type and Traffic on Nitrogen Oxide Emissions

Bubalo, Ante; Habuda-Stanić, Mirna; Ištoka Otković, Irena; Popović, Brigita

Source / Izvornik: **Sustainability, 2024, 16**

Journal article, Published version

Rad u časopisu, Objavljena verzija rada (izdavačev PDF)

<https://doi.org/10.3390/su16041448>

Permanent link / Trajna poveznica: <https://urn.nsk.hr/urn:nbn:hr:133:226343>

Rights / Prava: [Attribution-ShareAlike 3.0 Unported/Imenovanje-Dijeli pod istim uvjetima 3.0](#)

Download date / Datum preuzimanja: **2025-02-05**



GRAĐEVINSKI I ARHITEKTONSKI FAKULTET OSIJEK
Faculty of Civil Engineering and Architecture Osijek

Repository / Repozitorij:

[Repository GrAFOS - Repository of Faculty of Civil Engineering and Architecture Osijek](#)



Article

Analysis of the Impact of Agricultural Production Type and Traffic on Nitrogen Oxide Emissions

Ante Bubalo ¹, Mirna Habuda-Stanić ^{2,*}, Irena Ištoka Otković ³ and Brigita Popović ¹

¹ Faculty of Agrobiotechnical Sciences Osijek, Josip Juraj Strossmayer University in Osijek, Vladimira Preloga 1, 31000 Osijek, Croatia; ante.bubalo@fazos.hr (A.B.); brigita.popovic@fazos.hr (B.P.)

² Faculty of Food Technology Osijek, Josip Juraj Strossmayer University in Osijek, Franje Kuhača 18, 31000 Osijek, Croatia

³ Faculty of Civil Engineering and Architecture Osijek, Josip Juraj Strossmayer University in Osijek, Vladimira Preloga 3, 31000 Osijek, Croatia; iirena@gfos.hr

* Correspondence: mirna.habuda-stanic@ptfos.hr

Abstract: The protection of air from pollution is one of the basic principles of sustainable development, and this article analyzes the joint impact of various types of agricultural production and traffic on nitrogen oxide (NO_x) emissions. The goal of this research is the development of a new methodology for assessing the combined impact of different types of agricultural production, traffic load, and traffic flow structure on the emission of nitrogen oxides. For the analysis of the joint impact of traffic and agricultural production, a new impact assessment methodology was developed, which is based on two selected impact prediction models. The following two models were used to predict the impact: the BioGrace model and the microsimulation model VISSIM. The developed methodology was applied to a case study in real field conditions. The results showed that the difference in the emission of NO_x gases, depending on the type of agricultural production, indicates a reduction in NO_x emissions in the walnut–winter-wheat system by 30%, compared to the production of winter wheat in an open field. The statistical analysis showed that there is no statistically significant difference between NO_x emissions for different vehicle arrival scenarios for the same traffic load. The results of the joint impact show that the lowest NO_x emission was found in walnut orchards and counted traffic. In this example, the difference between the one-hour emission load of three different agricultural types of production and traffic is not large; however, in the cumulative load, it can lead to significant differences. Emphasizing the importance of adopting new agricultural practices and the impact of traffic and the share of freight and heavy goods vehicles in agricultural production, we position them as a proactive and sustainable response to the critical ecological and agricultural challenges highlighted in European and Croatian policy.

Keywords: NO_x emissions; traffic; agricultural production systems; microsimulation models



Citation: Bubalo, A.; Habuda-Stanić, M.; Ištoka Otković, I.; Popović, B. Analysis of the Impact of Agricultural Production Type and Traffic on Nitrogen Oxide Emissions. *Sustainability* **2024**, *16*, 1448. <https://doi.org/10.3390/su16041448>

Academic Editor: Antonio Boggia

Received: 17 January 2024

Revised: 5 February 2024

Accepted: 6 February 2024

Published: 8 February 2024



Copyright: © 2024 by the authors. Licensee MDPI, Basel, Switzerland. This article is an open access article distributed under the terms and conditions of the Creative Commons Attribution (CC BY) license (<https://creativecommons.org/licenses/by/4.0/>).

1. Introduction

Agricultural production and transport systems are basic components of the social and economic development of every country, but they have adverse impacts on the environment and human health. According to the estimates by the World Health Organization [1], exposure to polluted air causes the premature death of about 4.5 million people annually on a global level. A summary of the results of the research and measurements has shown that 96% of the world's population in suburban and urban environments is exposed to increased concentrations of air pollutants [2]. In the document of the World Health Organization's Global Strategy on Health, Environment, and Climate Change [3], the reduction in air pollution is set as one of the leading strategic goals of future development.

The World Health Organization is making efforts to introduce a unified methodology for collecting, analyzing, and presenting air pollution data so that the results at the global level are comparable. The furthest step toward this goal has been achieved in the European

Union [2] by introducing the same methodology of measurement, data analysis, and risk assessment of air pollution. The risk assessment is based on the air quality index, which introduces a prerequisite for comparing results and adopting strategies for reducing and controlling emissions in the urban and suburban areas of the European Union. The methodology of the European Union is implemented by the Republic of Croatia in the Air Protection Act, which was adopted in December 2019, with amendments and additions in May 2022 [4]. The provisions of the law (Art. 6, 11, 18, 40, and others) imply that spatial interventions (such as the construction and reconstruction of transport infrastructure or the selection of the type of agricultural production) must not negatively affect the emission quotas prescribed by the law, and that their impact must be quantified already in the planning phase.

Agricultural production is linked to suburban settlements, and the transport system is generated by the fundamental aspirations of society, such as accessibility and mobility, from the aspect of the needs of the economy, as well as those of every individual.

The air pollution caused by the operationalization of transport systems represents a constant source of air pollution, especially in the emission of nitrogen oxides and polluting particles, and the quantification of the impact of transport systems on the total air pollution is the subject of numerous studies. Conceptually, research can be divided into two groups, as follows: the first group of research focuses on the quantification and modeling of the emissions of harmful gases and particles that are released from traffic, while the second, larger group of research is directed toward the analysis of the impact of air pollution on human health and the environment. The results of the first group of research show a significant correlation between traffic load and the structure of the traffic flow and the concentration of polluting suspended particles [5–9], and the second group of research establishes a clear correlation between a high concentration of pollutants and diseases of the respiratory and cardiovascular systems [10].

The impact of the environment and weather conditions is significant on the results of the measurement of air pollution. An analysis of different studies [6–11] shows the adverse impact of narrow roads and high surrounding construction on the results of air pollution. The research [9] analyzes the impact of different parameters on the measured results of the emission of exhaust gases, such as the proximity of the road to the measurement station; environment; type of construction; greenery; weather conditions, especially wind; the proximity of water; and the size, speed, and structure of traffic flow. The study clearly shows that the application of the same methodology measurement and the consideration of environmental factors are the prerequisites for the comparability of results.

Different sources contribute to the emission of gases, such as transportation, household energy use, industry, energy generation, agriculture, and shipping. These emissions happen at different stages of farming, including making and using fertilizers, and tasks like planting, harvesting, and moving crops. This interaction between the changes in land use and the emissions they cause is crucial in shaping the local temperature changes and broader effects on the environment [12].

Nitrous oxide (N_2O) and methane (CH_4) are the main greenhouse gases emitted from agricultural activities, while carbon dioxide (CO_2) has the smallest impact on direct emissions within the agricultural sector [13].

Various practices in agricultural production contribute to the direct increase in N_2O emissions. These practices encompass the use of organic manure and composts, fertilization, storage of crop residues on soil, and the cultivation of nitrogen-fixing crops and forages, as well as the tilling of soils abundant in organic matter. Additionally, actions such as irrigation, drainage interventions, tillage operations, and fallowing also exert a direct influence on the increase in N_2O emissions. This increase is attributed to anthropogenic activities, including fossil fuel burning, deforestation emission from automobiles, forest fires, etc., [14].

The nitrogen fertilizers used in farming generate notable amounts of nitrogen-containing gases, like ammonia, nitric oxide, and nitrous oxide. By adopting improved practices for

managing farmland, it is possible to lower the release of these nitrogen-containing gases, leading to both a cleaner water environment and more climate-resilient agricultural methods [15].

Bearing in mind the great problem of air quality in populated places, it is important to assess the environmental impact in the planning phase for planning the construction and reconstruction of transport infrastructure and planning agricultural production, which the application of models enables.

This paper deals with the analysis of the joint impact of agricultural production and different infrastructure facilities on nitrogen oxide emissions using modeling. For the impact of traffic, microsimulation traffic modeling was used, which takes into account the traffic load, traffic structure, speed characteristics of vehicles, engine power, acceleration/deceleration parameters, vehicle fleet characteristics, and other parameters.

The analysis of the impact of traffic was made using microsimulation traffic modeling on three different traffic infrastructure facilities while, from the aspect of agricultural production, the impact of the winter wheat production in an open field and the intercropping system of walnuts and winter wheat production was observed.

The previous impact analysis resulting from the research objective included the development of a new methodology for assessing the combined impact of different types of agricultural production, traffic load, and traffic flow structure on the emission of nitrogen oxides.

Each of the mentioned areas of human activity, such as transport and agricultural production, has models and methodology for air pollution assessment. The air quality is the result of the joint action of different sources of pollution, and, in predicting their impact, the superimposing influences of the different sources of pollution can be predicted. The scientific contribution of this paper is the development and application of a methodology for assessing the joint impact on air quality of two different sources of air pollution.

2. Materials and Methods

For the analysis of the joint impact of traffic and agricultural production, a new impact assessment methodology was developed, which is based on two selected impact prediction models. The following two models were used to predict the impact: the BioGrace model and the microsimulation model VISSIM.

The Task Force on National Greenhouse Gas Inventories has developed guidelines for calculating greenhouse gas emissions within agriculture, forestry, and other land use sectors at a national level [16,17]. The guidelines provided by these calculations are frequently employed by process-based models like the BioGrace model (specifically, BioGrace version 4d 2015) [18] to compute greenhouse gas emissions. This model's validity has been acknowledged by the European Commission as a voluntary system that aligns with the sustainability standards of the Renewable Energy Directive [19]. The model permits users to input their data voluntarily, serving as an approved scheme to showcase the adherence to the EU-RED. BioGrace uses energy distribution in accordance with various regulations and has been used by numerous authors in their research [20–22].

VISSIM 11 is a widespread microsimulation software intended for the analysis of functional traffic parameters for various infrastructure solutions and traffic regulation [23]. One of the output indicators of microsimulations is fuel consumption and air pollution indicators. VISSIM has a different simulator structure from the other microsimulation models, whereby the nodes are modeled through links and connectors, which enables the modeling of highly complex intersections and non-specific infrastructure solutions.

The basic methodological steps are shown in Figure 1.

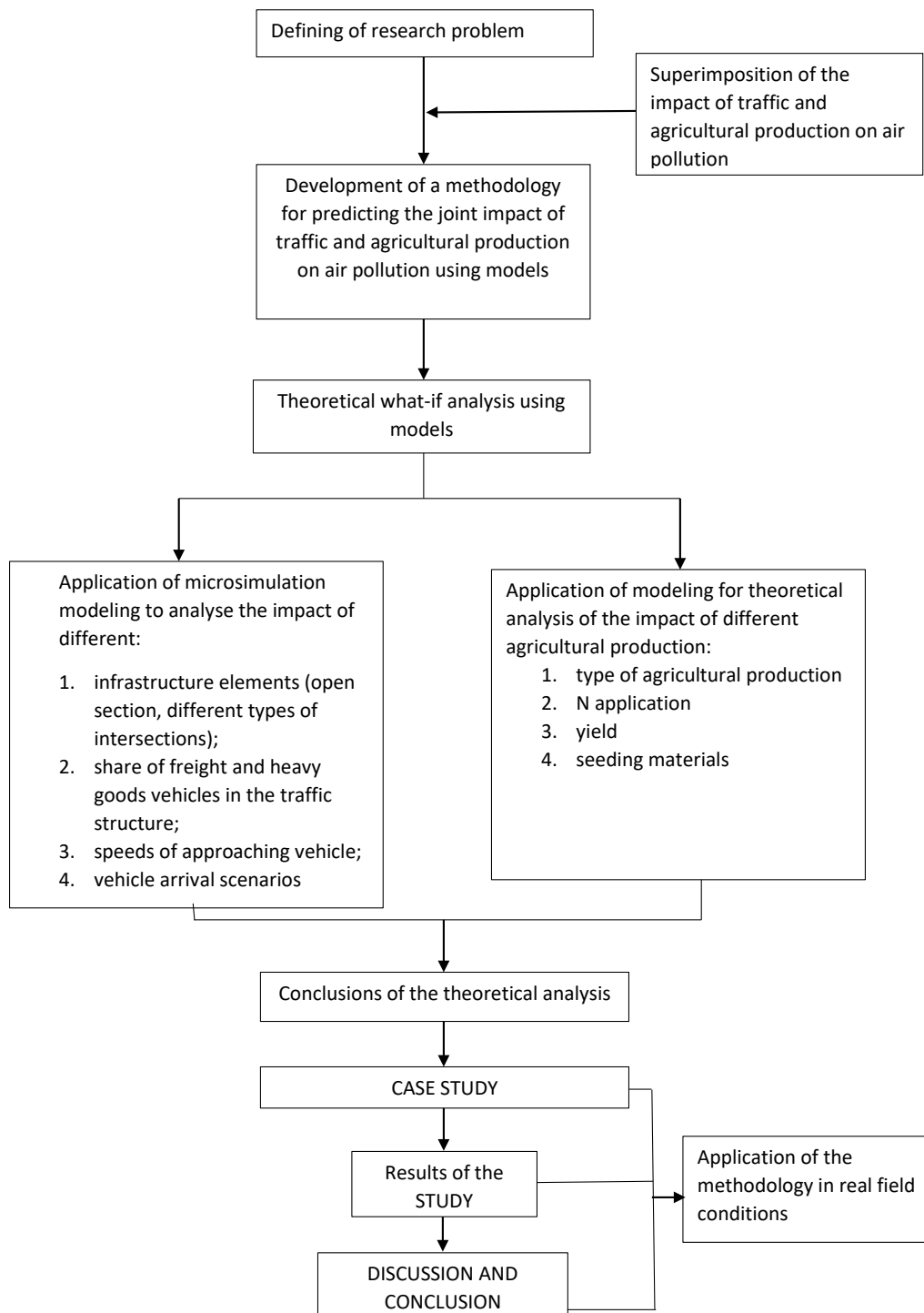


Figure 1. Diagram of basic methodological steps.

2.1. Development of a Methodology

In the first step, a methodology was developed for evaluating the impact of nitrogen oxide emissions based on the selected models.

The calculations of NO_x emissions from the different systems of agricultural production were made with the BioGrace model (version 4d 2015) based on the application of N-fertilizers, yield, and sowing rate during the growing season and using the BioGrace excel NO_x emission tools.

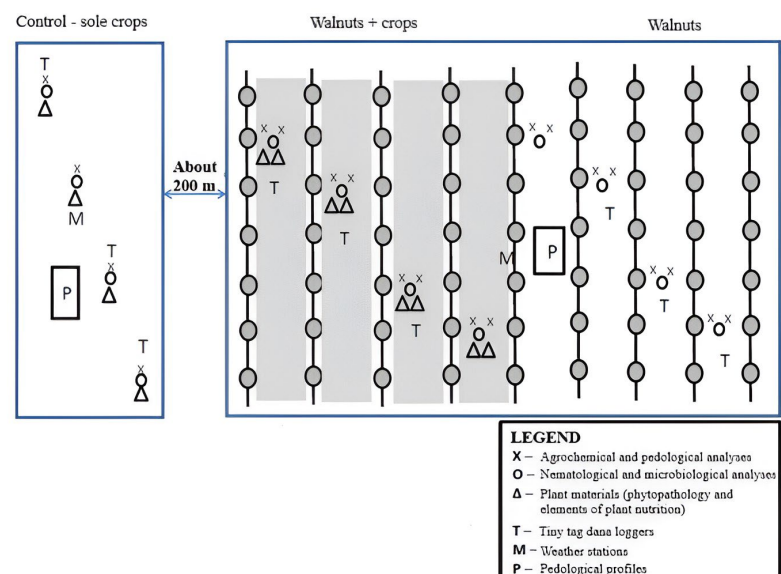
The analysis of the impact of traffic on the emission of nitrogen oxides was made by applying microsimulation traffic modeling (VISSIM) to three different traffic infrastructure facilities. The open road, three-leg, and four-leg intersections without traffic lights were analyzed, because these are the most common infrastructure facilities in suburban and non-urban networks with low and medium traffic loads. The influence of traffic flow speeds of 50 km/h and 100 km/h was analyzed. The different structures of traffic flow were analyzed, and the percentage of the share of freight vehicles varied, at 10, 20, and 30%. In the total share of freight vehicles, the percentage of heavy goods vehicles varied between 5, 10, and 20%. The traffic load was modeled for 1000 vehicles per hour, in all types of traffic infrastructure.

Respecting the stochastic nature of traffic flow, ten different scenarios of incoming vehicles were analyzed for each combination of model input parameters, with the same initial value and the same step of the random number generator. In this way, we analyzed the same ten traffic scenarios for all input data and all infrastructure facilities, which made the results comparable. A total of 180 scenarios were analyzed for each infrastructure solution.

2.2. Case Study

In the second step, the methodology was applied to a case study.

The field experiments took place at locations in eastern Croatia, Đakovo (45°18024.0900 N, 18°26020.500 E). The elevation of the Đakovo site measures 111 m above sea level. The soil type is characterized as luvisol pseudogley on loess, with an effective soil depth of 1500 mm [24]. The Đakovo region experiences a continental climate characterized by warm summers and cold winters, and it receives an average annual rainfall ranging from 600 to 1000 mm, evenly distributed throughout the year [25]. The experiment involved three distinct plots, each covering roughly 1.3 hectares, as follows: (a.) a control plot comprising a monoculture winter wheat system in an arable field; (b.) an exclusive walnut orchard; and (c.) a walnut orchard intercropped with bio winter wheat—200 kg ha⁻¹. The walnut orchard consisted of *Juglans regia* L. trees, with the orchard's layout consisting of 8-m-wide alleys between the trees, and the spacing within the rows of walnut trees was 7 m. The tree density was consistent for both the exclusive walnut orchard and the intercropped version. The average height of the walnut trees was 5.5 m, with a canopy width of 5 m (Scheme 1) [25].



Scheme 1. Field experiment scheme (Đakovo, Croatia).

In our study, winter wheat was in primary focus, due to its status as the predominant grain (bread) crop in the Republic of Croatia. According to the Croatian Bureau of Statistics [26], there were 161,000.00 ha under the winter wheat production in Croatia.

By choosing winter wheat, our intention was to approximate the prevailing agricultural practices and conditions in Croatia, which enabled us to investigate the real impact of the intercropping system on the crops most commonly grown in the region, encouraging a stronger connection between scientific research and the economic reality. On the other hand, given the fact that walnut cultivation is widespread in Croatia and holds significance in local agriculture, it was also included in our study. Notably, walnut trees have the potential to acidify soil. Consequently, we chose agricultural crops that demonstrate a tolerance to acidic soil conditions. This decision adds an extra layer of relevance to our research, as it aligns with the prevalent conditions in areas where walnuts are commonly cultivated. Simultaneously, this type of cultivation fosters allelopathic interactions among plants, a phenomenon characterized by the release of different chemical substances and compounds into the surrounding soil, influencing the neighboring plants. These chemical compounds are typically by-products of essential plant processes and are generated in various plant components, such as the roots, stems, leaves, flowers, and fruits. In intercropping systems involving walnuts, it is preferable to select orchards with grafted plants. This preference arises because walnut trees produce juglone, a substance that can have a detrimental impact on the germination of other plants. Orchards featuring grafted walnut trees exhibit a less intense secretion of juglone, and, within the initial 15 years of such intercropping systems, the juglone's activity does not exert a significant toxic effect. Furthermore, it is recommended to incorporate organic matter through practices like the application of green manure or organic fertilizers. These approaches enhance microbiological activity in the soil, facilitating the decomposition of juglone [25]. Moreover, the selection of walnuts as a focal point is motivated by their added value. Croatia boasts a stable industry dedicated to the production of alcoholic beverages, particularly liqueurs, which actively procures walnuts as a key raw material. This industry-driven demand for walnuts further underscores the practical relevance of our study, as it addresses the interconnectedness of agricultural production with downstream economic activities, providing valuable insights for both the agricultural and industrial sectors in Croatia.

2.2.1. Methodology for Analyzing the Impact of Agricultural Production

The emissions from the production of fertilizers (primarily N emission) are calculated by using the following equation:

$$\text{EM fertilizer} = \text{fertilizer input} \times \frac{\text{kg nutrient}}{\text{ha year}} \times \text{EF production} \frac{\text{kg CO}_2\text{eq}}{\text{kg nutrient}}$$

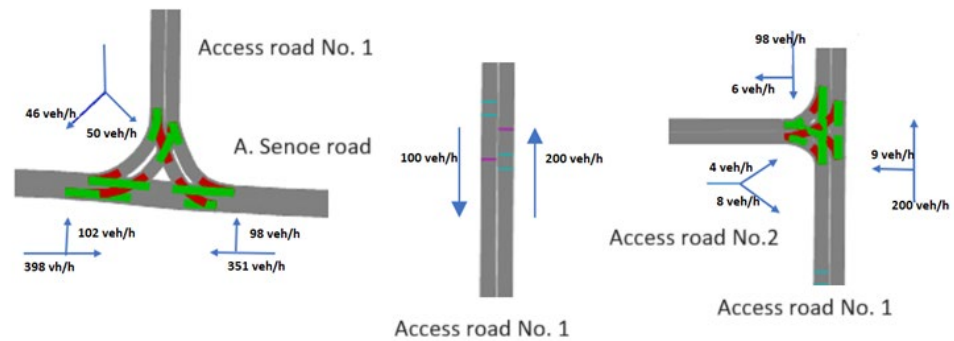
EM fertilizer represents the production of gas emissions from the total amount of fertilizers used for the vegetation, and EF refers to the total amount of nitrogen fertilizers used for the vegetation. In our research, nitrogen was applied by only using organic fertilizers, because the case study was set up in agricultural production that was carried out according to the principles of ecological production.

The greenhouse gas emissions associated with fertilizer production vary according to the different processing technologies of different nitrogen fertilizers and energy sources. New technologies, including catalytic cleaning of NO_x and N₂O, have lowered the emissions from the production of fertilizers. Fertilizers Europe (2014) [27] states that all operating plants in Europe have had abatement systems since the mid-2010s.

2.2.2. Methodology for Analyzing the Impact of Transport Infrastructure

For a basic insight into the traffic load, a one-hour traffic count was made on the traffic network located near the observed experimental field. The observed location includes two three-leg intersections, one of primary functional level and higher traffic load (the intersection of A. Senoe Road and Access Road No. 1), and one of secondary functional level (the intersection of Access Road No. 1 and Access Road No. 2), which serves to access agricultural areas (Scheme 2). The traffic was recorded with a video camera from 15:00 to 16:00 on Thursday, 6 October 2022. The recording was made for several hourly traffic

loads, e.g., the morning peak hour (7:00 to 8:00), however, the afternoon peak hour has the highest traffic load in the observed location. Considering the positive correlation between traffic load and air pollution [5–9], the maximum traffic load produces the highest amount of air pollution, which represents a critical influence. The traffic structure determined at the observed location had 81% of passenger vehicles, 18.5% of goods vehicles, and 0.5% of buses. In the structure of the goods vehicles, 15% were heavy goods vehicles.



Scheme 2. Intersections leading to the field experiment (Đakovo, Croatia).

The calculated traffic load and traffic structure represent the input data of the modeling. The different vehicle arrival scenarios represent a stochastic variable in the traffic impact analysis. VISSIM provides the ability to model the stochastic nature of the traffic flow by using a random number generator to generate the traffic load. For this analysis, the initial value of the random seed generator (random seed 42) and the increment of 10 were set, which selected 10 random scenarios. The same data input into the random number generator will yield the same vehicle arrival scenarios, making the experiment repeatable.

The average speeds are 90 km/h on the main road, 50 km/h on the secondary road, and 30 km/h on the access road toward the experimental location.

2.2.3. Statistical Analysis

The database was created for the emission of nitrogen oxides in time intervals of one minute for ten scenarios of different vehicle arrival scenarios for the calculated hourly traffic load in the field. In this way, 60 emission data points were obtained for each observed vehicle arrival scenario. An analysis of data distribution was made using the Anderson–Darling test, and the null hypothesis was that the data would follow a normal distribution pattern, with a set significance threshold of 0.05. The analysis of the data distribution was made due to the selection of a statistical test for the evaluation of statistically significant differences in the individual data sets.

Bonett and Levene tests were used to evaluate the statistically significant differences between sets of nitrogen oxide emissions data for different vehicle arrival scenarios [28], which were applicable to data that do not follow a normal distribution pattern. The null hypothesis was that the data sets would not differ statistically significantly, i.e., that the ratios of standard deviations and variances would be approximately equal to 1 ($\sigma_x/\sigma_y = 1$; $V_x/V_y = 1$; where x and y are the markers of different scenarios), and the significance threshold was set as 0.05.

The statistical analysis of the obtained results for agricultural production was processed by the ANOVA LSD test ($p < 0.05$). As a dependent variable in the analysis of variance, the data on NO_x emissions in different production systems were used in accordance with the intervals used for the database for the analysis of traffic scenarios. All measurements were performed in 4 repetitions.

3. Results

3.1. Results of Theoretical Analysis

3.1.1. Impact on NO_x Emissions from Agricultural Production

The different agricultural production systems and N applications yielded diverse NO_x emission values, which will be subject to further analysis and discussion. Table 1 presents the various data used in the calculation of NO_x emissions.

Table 1. Main research data for the calculation of NO_x emissions.

Type of Agricultural Production	N Application, kg ha ⁻¹	Yield, kg ha ⁻¹	Seeding Materials 200 kg ha ⁻¹ Eco Wheat	Field NO _x Emission kg N ₂ O ha/Year
Walnut	100	47,000	-	1.01
Winter wheat	100	6700	55.17	1.47
Walnut–winter-wheat system	100	6000	55.17	1.03

The emission of gases within different agricultural production systems varied, starting at 1.01 kg of N₂O per hectare per year within the orchard. This was followed by 1.03 in the walnut–wheat intercropping system, while the highest measurement of 1.47 occurred during wheat cultivation in an open field. These results distinctly illustrate the beneficial influence of intercropping on mitigating NO_x emissions within agricultural production systems.

3.1.2. Results of Modeling the Impact of Transport Infrastructure on NO_x

We analyzed the impact of the traffic flow speeds, in which the percentage of the share of freight vehicles varied between 10, 20, and 30%, and, in the total share of freight vehicles, the percentage of heavy goods vehicles varied between 5, 10, and 20%. For each combination of different values, we analyzed ten vehicle arrival scenarios, which means that 180 simulations were made for each infrastructure solution. We analyzed the impact of the open section of the two-lane road, and, among the critical objects, we analyzed the three-leg and four-leg intersections.

Figure 2 shows a comparison of the total emission of nitrogen oxides (in summary for all traffic flows) for all of the infrastructure solutions and speeds of 50 km/h and 100 km/h.

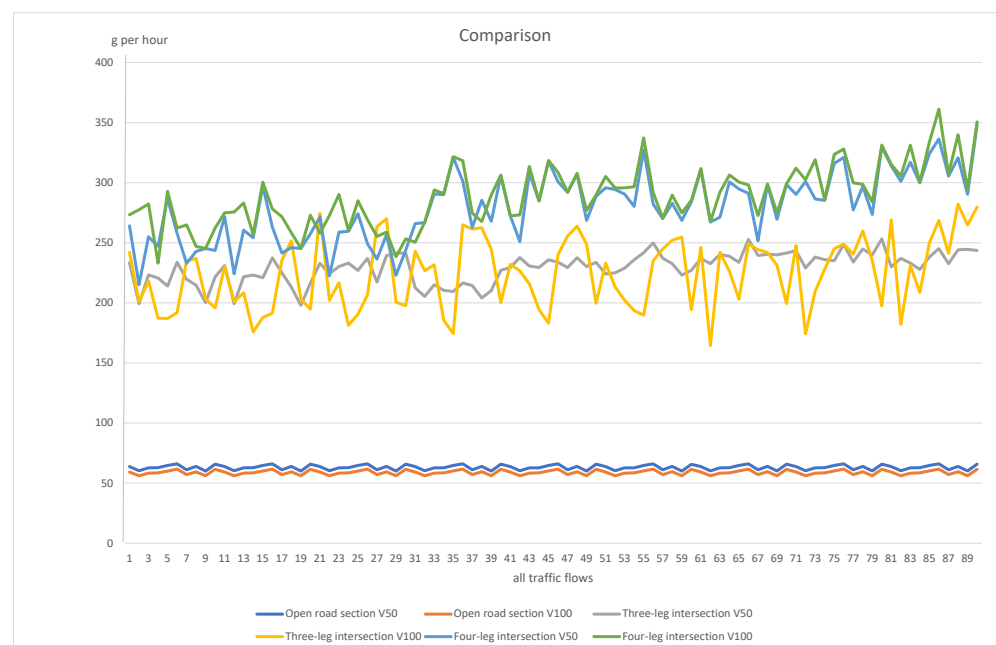


Figure 2. Comparison of total emission of nitrogen oxides for different infrastructure facilities and incoming speeds.

The results of the emission of nitrogen oxides were analyzed in the range of minimum, maximum, and mean values for all of the input data. Figure 3 shows the minimum, maximum, and mean values of nitrogen oxide emissions for ten different vehicle encounter scenarios for 18 sets of input data.

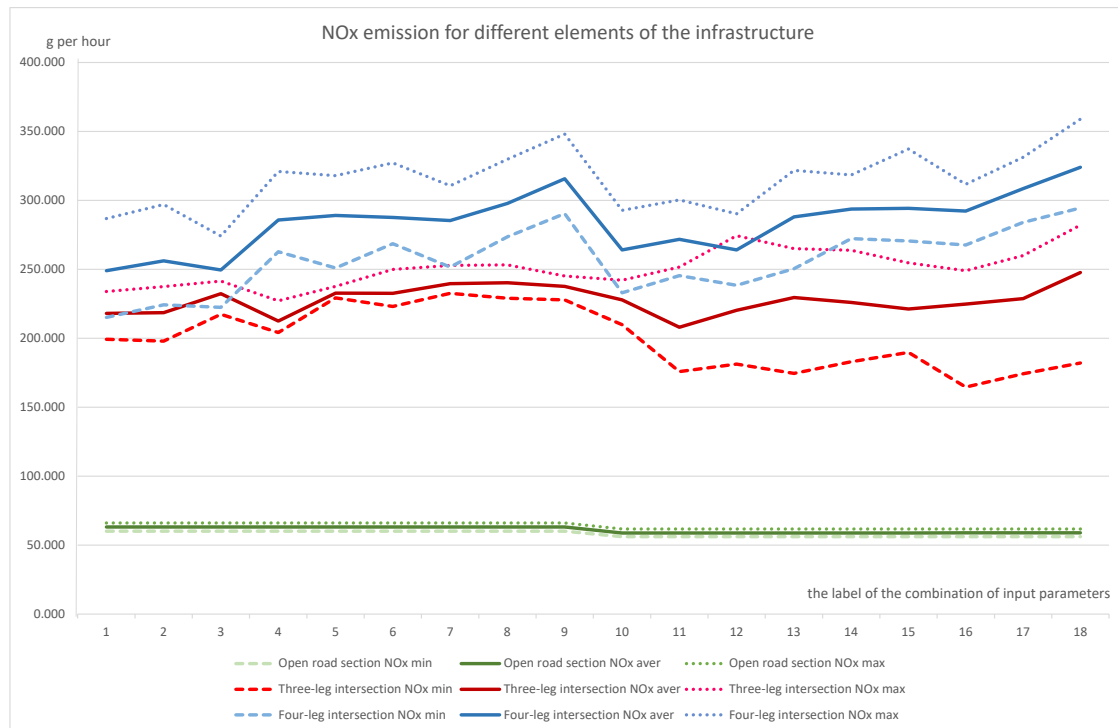


Figure 3. Comparison of minimum, maximum, and mean values of nitrogen oxide emissions for different infrastructure facilities.

As expected, the open road section showed the lowest sensitivity to speed variations and traffic flow structure, therefore, the difference between the best and worst scenarios for the minimum, maximum, and average NOx emission values was 6.6%, 6.7%, and 6.8%, respectively.

The NOx emissions in the intersection conditions were three times higher, and there was greater variability between the best and worst scenarios and greater sensitivity to speed and traffic flow structure.

3.2. Results of Case Study

3.2.1. Impact on NOx Emissions from Agricultural Production

The data presented in Figure 4 highlight the variations in NOx gas emissions based on the agricultural production types, demonstrating a 30% decrease in NOx emissions within the walnut–winter-wheat system compared to winter wheat cultivation in an open field. In addition, the analysis of the variance of the obtained data showed a statistically significantly lower emission of gases in the walnut orchard and walnut–winter-wheat system compared to that of the winter wheat (LSD test, 95%). A statistically significant difference was not observed in the walnut orchard in relation to the intercropping system, which directly points to the possibility of increasing productivity per unit area on the one hand and reducing gas emissions on the other.

Table 2 shows the descriptive statistics of the database for the emission of NOx from the different types of agricultural production. As a dependent variable in the analysis of variance, the data on NOx emissions in the different production systems were used in accordance with the intervals used for the database for the analysis of the traffic scenarios. The results indicate a significant connection between the two variables ($A \times B$), i.e., that the NOx emission was significantly influenced by the production system.

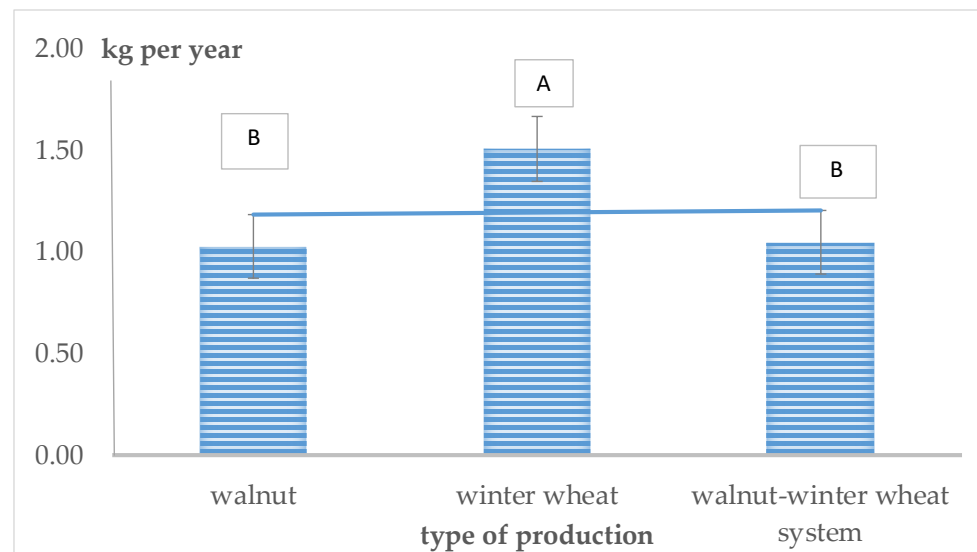


Figure 4. The emission of NO_x gases in different types of agricultural production (ANOVA, LSD 0.0128; *t* value 2.2621, AB—different letters means a statistically significant difference).

Table 2. Descriptive statistical analysis of different types of agricultural production (field NO_x emission).

Type of Agricultural Production	N	Mean	StDev	Variance	<i>p</i>
Walnut	60	1.015	0.0058	0.00003	<0.01
Walnut—winter-wheat systems	60	1.0275	0.0095	0.00009	<0.01
Winter wheat	60	1.47	0.0081	0.00006	<0.01

3.2.2. Impact on NO_x Emissions from Traffic

In the continuation of the research, microsimulation traffic modeling was applied to the traffic network near to the experimental field in order to analyze the influence of traffic on NO_x emissions. In the VISSIM microsimulation model, the data on traffic load, traffic structure, and speeds recorded in the field were entered. The NO_x emission results for the actual traffic load on the entire experimental section for ten vehicle arrival scenarios are shown in Figure 5. Figure 5 shows the cumulative emissions of nitrogen oxides from traffic for the peak hour traffic load.

A database was created for the emission of nitrogen oxides every minute of the observed hour, and the minute emissions for 10 different scenarios of vehicle arrival were compared. Table 3 shows the descriptive statistics of the database for the emission of nitrogen oxides for the observed different vehicle arrival scenarios for the same traffic load. An analysis of the data distribution was made using the Anderson–Darling test (A–D in Table 3), and the null hypothesis was that the data would follow a normal distribution pattern, with a set significance threshold of 0.05. The analysis of the data distribution was made due to the selection of a statistical test for the evaluation of statistically significant differences in the individual data sets.

Except for the first scenario, for which the null hypothesis cannot be rejected, the emission of nitrogen oxides in the other nine scenarios does not confirm the hypothesis, therefore, it can be concluded that the data do not follow a normal distribution pattern.

A test for two variances, using Levene’s and Bonett’s methods, was performed in order to establish if there is a statistically significant difference among the data for every possible pair of vehicle arrival scenarios. The results of the analysis are presented in Table 4.

A difference in the emission of nitrogen oxides between the different scenarios exists (Figure 5), but it is not statistically significant, according to the results shown in Table 4. The results shown in Table 4 are expected because all of the analyzed vehicle arrival

scenarios have the same traffic load for the observed peak hour. For a statistically significant difference, the traffic load should be changed.

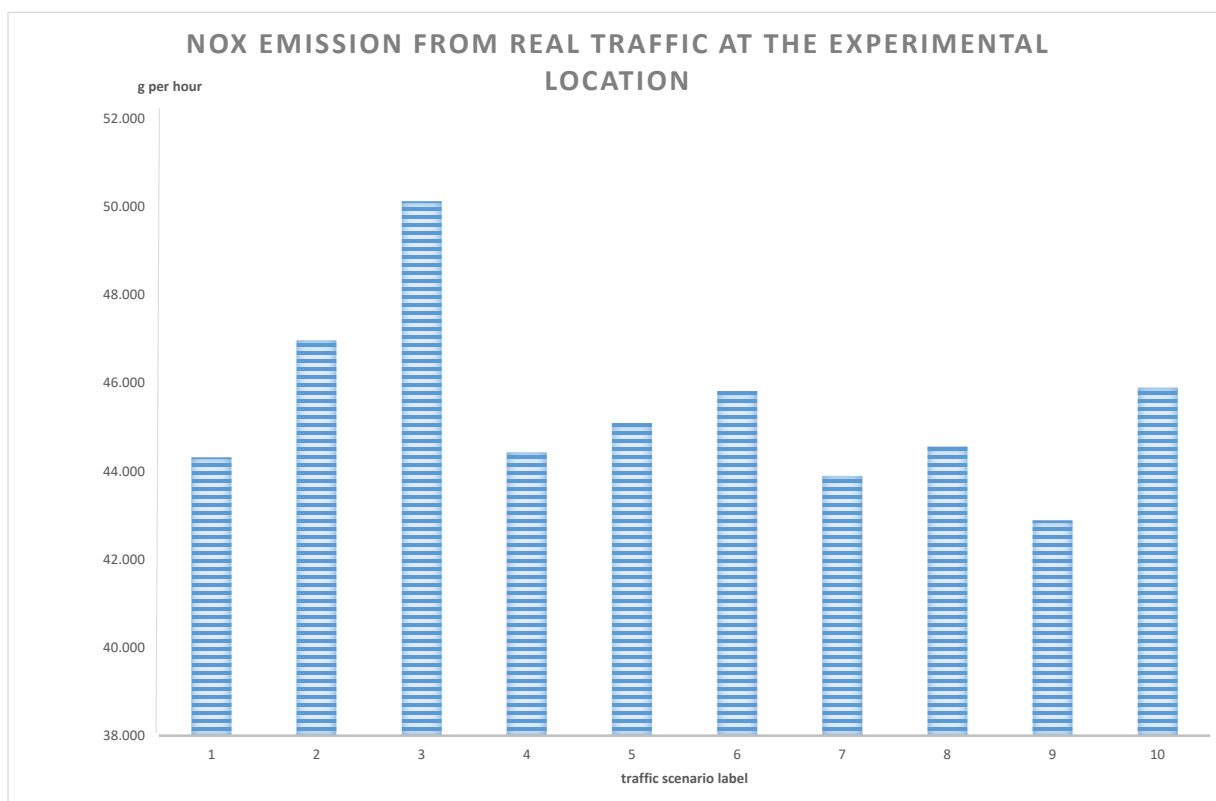


Figure 5. The NOx emission results for the actual traffic load.

Table 3. Descriptive statistical analysis for ten different vehicle arrival scenarios.

	N	Mean	StDev	Min	Max	Median	Variance	A–D	<i>p</i>
S1	60	0.7386	0.2139	0.3619	1.3996	0.7051	0.046	0.598	0.116
S2	60	0.7829	0.3547	0.3566	2.3156	0.6975	0.126	3.476	<0.005
S3	60	0.8354	0.3225	0.3092	1.9305	0.7577	0.104	2.853	<0.005
S4	60	0.7406	0.2777	0.2379	1.6695	0.704	0.077	1.030	0.010
S5	60	0.7515	0.2926	0.3484	2.1861	0.7363	0.086	1.366	<0.005
S6	60	0.7637	0.2764	0.3286	1.7787	0.7099	0.076	1.346	<0.005
S7	60	0.7317	0.2412	0.3622	1.4425	0.6598	0.058	1.024	0.010
S8	60	0.7427	0.2486	0.3504	1.8628	0.7402	0.062	1.533	<0.005
S9	60	0.7148	0.2588	0.3134	1.4463	0.6605	0.067	1.068	0.008
S10	60	0.765	0.2654	0.4393	1.8512	0.6756	0.070	1.540	<0.005

Table 4. Test for two variances using Levene’s and Bonett’s methods.

		S1		S2		S3		S4		S5		S6		S7		S8		S9		S10	
		ST	p	ST	p	ST	p	ST	p	ST	p	ST	p	ST	p	ST	p	ST	p	ST	p
S1	B		*																		
	L																				
S2	B	2.4	0.12		*																
	L	1.8	0.18																		
S3	B	3.2	0.08	0.1	0.73		*														
	L	1.9	0.17	0.0	0.92																
S4	B	1.8	0.18	0.7	0.40	0.5	0.49		*												
	L	1.6	0.20	0.1	0.71	0.1	0.77														
S5	B	1.2	0.28	0.4	0.54	0.1	0.71	0.0	0.84		*										
	L	2.0	0.16	0.1	0.82	0.0	0.89	0.0	0.86												
S6	B	1.7	0.19	0.7	0.39	0.5	0.48	0.0	0.98	0.1	0.83		*								
	L	1.7	0.20	0.1	0.72	0.1	0.79	0.0	0.99	0.0	0.88										
S7	B	0.7	0.40	1.6	0.20	1.8	0.17	0.6	0.43	0.5	0.47	0.6	0.45		*						
	L	1.6	0.21	0.2	0.61	0.2	0.66	0.0	0.88	0.1	0.74	0.0	0.86								
S8	B	0.4	0.52	1.3	0.26	1.2	0.28	0.2	0.63	0.3	0.58	0.2	0.64	0.0	0.89		*				
	L	0.1	0.79	1.2	0.27	1.2	0.28	0.9	0.35	1.2	0.28	0.9	0.35	0.8	0.38						
S9	B	1.3	0.25	1.1	0.29	1.1	0.30	0.2	0.70	0.2	0.64	0.1	0.72	0.2	0.65	0.0	0.85		*		
	L	1.3	0.26	0.3	0.60	0.2	0.65	0.0	0.85	0.1	0.72	0.0	0.83	0.0	0.96	0.6	0.44				
S10	B	1.0	0.31	0.9	0.34	0.7	0.39	0.1	0.83	0.1	0.72	0.0	0.85	0.2	0.63	0.1	0.79	0.0	0.90		*
	L	1.1	0.29	0.25	0.62	0.2	0.67	0.0	0.86	0.1	0.74	0.0	0.85	0.0	0.97	0.6	0.46	0.0	0.99		

* means the same data groups.

3.2.3. Joint Impact of Agricultural Production and Traffic

The joint impact of agricultural production and traffic was analyzed for the actual traffic load and for the traffic structure, which was determined by field measurements at the experimental location. Bearing in mind that the hourly traffic load was analyzed using microsimulations, the NOx emission values were obtained in grams per hour. For the purposes of joint impact analysis, the emissions from the agricultural production expressed in kg/year were converted into NOx emissions in grams per hour (Figure 6).

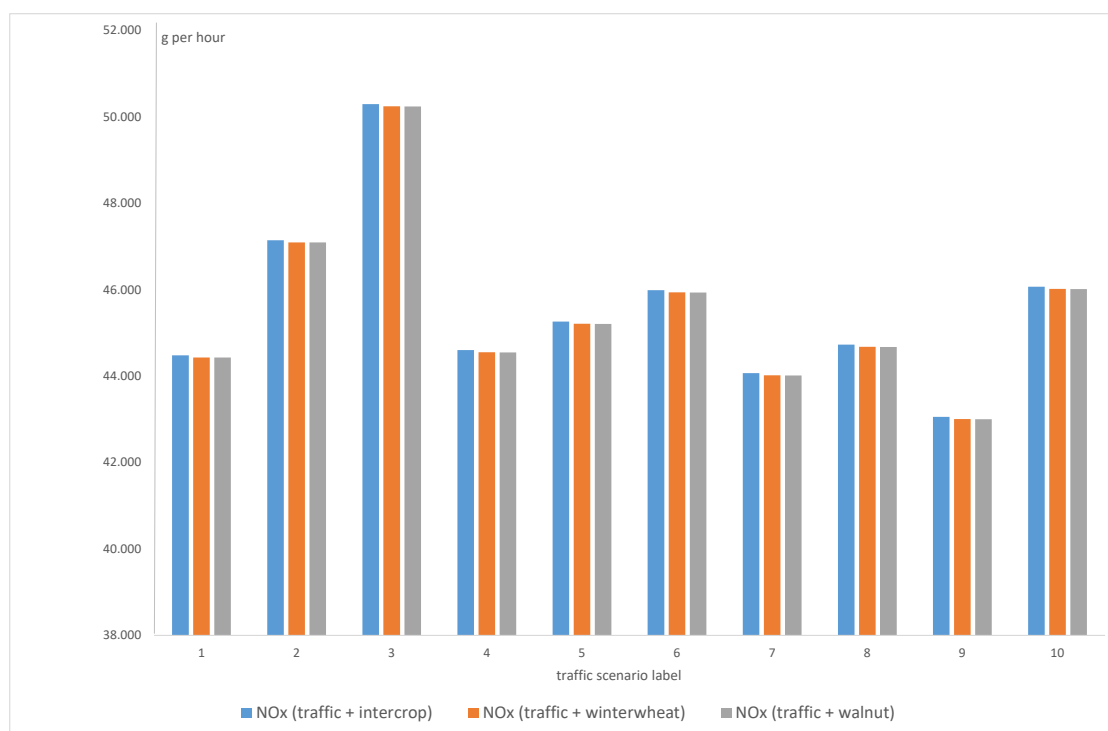


Figure 6. Joint impact of traffic and type of agriculture on NOx emissions.

The results of the joint impact show that the lowest NO_x emission level was found in the walnut orchards and the counted traffic. In this example, the difference between the one-hour emission load of the three different agricultural types of production and traffic is not large; however, in the cumulative load, it can lead to significant differences.

4. Discussion

The aim of this work was to develop and apply a methodology for the analysis of the joint influence of the type of agricultural production and traffic on the emission of nitrogen oxides.

The timing, fertilizer quantity, fertilizer source, and type of agricultural production system used can all influence the rise in NO_x emissions. Moreover, the manufacturing, application, and transportation processes contribute to increased CO₂ and N₂O emissions [29,30]. Of even greater significance is the observation that the excessive use of N fertilizers can lead to a proportional increase in NO_x emissions, particularly when the nitrogen application rates exceed the actual requirements of the crops [31,32]. The substantial utilization of nitrogen in agricultural production is primarily reliant on considerable amounts of non-renewable energy, as estimated by [33], ultimately resulting in potential disadvantages. Such excessive practical application leads to heightened N₂O emissions, consequently escalating the GHG (greenhouse gas) emissions when normalized by yield. However, even more crucially, it can decrease both the efficiency of nitrogen utilization and, moreover, crop productivity, as indicated by [34]. According to [35], the exponential escalation of NO_x emissions is directly correlated with the nitrogen fertilization rate. The authors have suggested that, for a nitrogen fertilization range of 50–150 kg in wheat, the emission of NO₂ was measured at 0.57 kg per hectare per year—significantly lower than the values observed in our study. Namely, in our research, the differences between the model-predicted and the actually measured nitrogen oxide emission values were very similar, and the influence of the different production systems on the nitrogen oxide emissions was confirmed. In both cases, the highest emission rate was recorded from growing wheat in an open field, which was about 1.50 kg ha NO_x per year (Table 1, Figure 4). The recorded results are probably a consequence of the ecological agricultural production in which the source of nitrogen is organic fertilizers, as we stated in the equation in the methodology. However, the importance of nitrogen fertilization in modern sustainable agriculture cannot be overstated. This consideration encloses both ecological and economic implications [36] in order to achieve both the production of sufficient high-quality food and the mitigation of ecological disturbances and impacts. Environmental preservation, economic viability, efficiency, food safety, and quality are recognized as being essential for sustainable and viable agricultural production [37].

From this point of view, it is important to point out that, in our research, no statistically significant difference was found between NO_x emissions in the walnut orchard compared to the intercropping system, therefore, the reason for the introduction of the intercropping system in agricultural production can be found in other advantages. Namely, it is essential to note that intercropping significantly outperforms monocultures in terms of productivity per unit area. This disparity in productivity highlights the substantial advantages associated with intercropping farming practices. This increase in productivity aligns with the objectives outlined in both the Green Deal and the Common Agricultural Policy of the European Union (EU). Additionally, by combining permanent wood species with agricultural crops on the same parcel of land, there is an influence on the temperature, humidity, insolation, and wind flow within the orchard (microclimate), which improves plant resistance to stress conditions, such as climatic extremes (drought and flooding) [24].

A theoretical analysis of the impact of different shares of freight and heavy goods vehicles in the traffic flow structure, different speeds, and different infrastructure solutions was made using microsimulations, the results of which are shown in Figures 2 and 3. For the three-leg intersection, the difference between the best and worst NO_x emission scenarios for the minimum, maximum, and average values was 29.3%, 19.5%, 16.0%, respectively. The worst-case scenario was for an incoming speed of 100 km/h, for a share of goods

vehicles of 30% and a share of heavy goods vehicles of 20%, which was expected. The best scenarios were obtained for the share of heavy goods vehicles up to 5%.

For the four-leg intersection, the variability between the best and worst scenarios was the greatest. The difference between the best and worst NO_x emission scenarios for the minimum, maximum, and average values was 27.0%, 23.6%, and 23.1%, respectively. The worst-case scenario was for an incoming speed of 100 km/h, for a share of goods vehicles of 30%, and a share of heavy goods vehicles of 20%.

The results showed that all of the worst-case scenarios for NO_x emissions from traffic had a share of trucks of 30% and a share of heavy trucks in the total number of trucks of 20%, which was the expected result. The best scenario was obtained for a minimum share of freight vehicles of up to 10% and a minimum share of heavy goods vehicles of up to 5%, at an incoming speed of 50 km/h, which was the expected result.

By analyzing the results presented in this paper, it can be concluded that, for the same infrastructural solution, the share of freight and heavy goods vehicles in the structure of the traffic flow plays a significant role in NO_x emissions, coinciding with the results of this study [38], which shows that the traffic structure has a significant influence on NO₂/NO_x emissions. Beevers et al., 2012 [39] analyzed the difference in emission contributions between light diesel vehicles, heavy diesel vehicles, and petrol vehicles. It can be seen that the relative importance of light diesel vehicles for the total NO_x emissions drives the difference in emission trends.

The study [40] analyzes the impact of transport infrastructure and different transport strategies on air pollution, which shows the importance of analyzing different variant solutions of infrastructure in the context of air pollution, and the results are comparable to those of the analysis presented in this article.

Within the scope of this work, different speeds proved to be an important factor in the analysis of NO_x emissions, as shown by the research conducted in China on actual measured data [41], which shows the influence of the road category, speed, and acceleration on the emission of exhaust gases from traffic, coinciding with the results of this article.

The results of the theoretical analysis of the methodology based on modeling were compared with the results of the field research conducted in the real world and showed a good match. This comparison of results served to verify the methodology.

As part of the case study, an analysis of nitrogen oxide emissions was made for different vehicle arrival scenarios for the same traffic load. The analysis showed that there are differences (Figure 5), but they are not statistically significant (Table 4). This was the expected result, because it is about the same traffic load and the same traffic flow structure.

As we stated in the results (Figure 6), the lowest NO_x emissions were found in the walnut orchards and the counted traffic. These results were expected, because the joint impact is the combined impact of traffic and the type of agricultural production on NO_x emissions. However, it is important to emphasize that the difference in NO_x emissions between the types of agricultural production decreases under the influence of traffic, i.e., the difference in the impact of the type of agricultural production on NO_x emissions becomes less significant. These are very important indicators for planning the management of NO_x emissions from agricultural production in general. Namely, so far, the influence of fuel use and consumption in individual agricultural production systems has been observed, but not the influence of traffic itself on the changes in NO_x emissions in agriculture, and the results of this research can be used to create more precise scenarios for reducing greenhouse gas emissions in general.

Key global agreements, such as the European Green Deal, the Paris Agreement, Common Agricultural Policy (CAP), and reports from the International Panel on Climate Change (IPCC), are integral to our approach. The benefits of intercropping farming, such as increased productivity and reduced GHG emissions, perfectly align with the guidelines outlined in these pivotal international and national policy documents. In emphasizing the importance of adopting new agricultural practices, the impact of traffic, and the share of freight and heavy goods vehicles in agricultural production, we position them as proactive

and sustainable responses to the critical ecological and agricultural challenges highlighted in the CAP documents [36].

5. Conclusions

The problem of air quality has become a global issue, therefore, different strategies to control air pollution are being investigated. Air pollution comes from different sources and is caused by different human activities, and this combined influence leads to the total emission load, so it should be analyzed that way. As part of this work, a methodology for analyzing the joint impact of agricultural production and traffic on the emission of nitrogen oxides was developed and tested.

The limitation of this research is the small number of data variations, therefore, the results should be viewed in that context. Longer monitoring periods of traffic load oscillations on a daily, monthly, and annual level would allow for a better insight into the actual NO_x emission values. In this example, the traffic load of one peak hour was analyzed, which cannot give us a final picture, but gives a basic insight into the critical influences of traffic on the emission load, in this case NO_x. Future research should include a larger and more variable database and statistical analysis of the influencing factors of the applied models.

Validation of the modeled impact should definitely be carried out on the data of the measured air pollution over a longer period of monitoring and in different field conditions and types of production (conventional, ecological, different amounts of fertilizer, different agrotechnical measures, etc.).

In our research, for the calculation of the NO_x emissions, from the aspect of agricultural production, we took into account only the type of agricultural production and the yield, while the amount of nitrogen in all types of production was the same (100 kg ha⁻¹). We decided on this approach in order to highlight the joint influence of traffic and agricultural production as precisely as possible, including as few different parameters as possible. Namely, considering that these included an ecological production of walnuts, winter wheat, and an intercropping system of wheat–walnuts, it is to be expected that, in conventional production, these differences will be significant. Likewise, the impact of agrotechnical measures was reduced to a minimum, i.e., the agrotechnical measures were the same in all of the systems; however, it is known that, by switching from conventional tillage to no-tillage, the emission of GHGs can be significantly reduced. The use of a no-tillage system has an effect on traffic less loaded with heavy vehicles, as well as a reduction in fuel consumption, and this should certainly be included in the modeling of future research on this issue.

The joint impact analysis methodology presented in this paper can be applied in the emission analysis of existing agricultural production areas and the existing associated transport network and traffic, as was carried out in this paper. This methodology has an even greater potential in choosing the best strategy for agricultural production, transport infrastructure, and traffic flow structure in limiting or reducing air pollution.

Author Contributions: Conceptualization, B.P., I.I.O. and M.H.-S.; methodology, I.I.O. and B.P.; software, B.P.; validation, A.B. and B.P.; formal analysis, A.B.; investigation, A.B., B.P. and I.I.O.; resources, B.P.; data curation, A.B., B.P. and M.H.-S.; writing—original draft preparation, A.B. and B.P.; writing—review and editing, M.H.-S.; visualization, A.B.; supervision, B.P. All authors have read and agreed to the published version of the manuscript.

Funding: This research received no external funding.

Institutional Review Board Statement: Not applicable.

Informed Consent Statement: Not applicable.

Data Availability Statement: Data will be made available on request.

Conflicts of Interest: The authors declare no conflicts of interest.

References

1. World Health Organization. Available online: <https://www.who.int/data/gho/data/indicators/indicator-details/GHO/ambient-air-pollution-attributable-deaths> (accessed on 19 June 2023).
2. Cromar, K.; Lazrak, N. *Risk Communication of Ambient Air Pollution in the WHO European Region: Review of Air Quality Indexes and Lessons Learned*; WHO Regional Office for Europe: Copenhagen, Denmark, 2023.
3. World Health Organization. *WHO Global Strategy on Health, Environment and Climate Change: The Transformation Needed to Improve Lives and Wellbeing Sustainably through Healthy Environments*; World Health Organization: Geneva, Switzerland, 2020.
4. Narodne Novine. Available online: https://narodne-novine.nn.hr/clanci/sluzbeni/2019_12_127_2553.html (accessed on 18 June 2023).
5. World Health Organization. *WHO Global Air Quality Guidelines: Particulate Matter (PM_{2.5} and PM₁₀), Ozone, Nitrogen Dioxide, Sulfur Dioxide and Carbon Monoxide*; WHO: Geneva, Switzerland, 2021.
6. Harrison, R.M.; Vu, T.V.; Jafar, H.; Shi, Z. More mileage in reducing urban air pollution from road traffic. *Environ. Int.* **2021**, *149*, 106329. [CrossRef]
7. Tomassetti, L.; Torre, M.; Tratzi, P.; Paolini, V.; Rizza, V.; Segreto, M.; Petracchini, F.; Tomassetti, L.; Torre, M.; Tratzi, P.; et al. Evaluation of air quality and mobility policies in 14 large Italian cities from 2006 to 2016. *J. Environ. Sci. Health Part A* **2020**, *55*, 886–902. [CrossRef]
8. Holnicki, P.; Nahorski, Z.; Kałuszek, A. Impact of Vehicle Fleet Modernization on the Traffic-Originated Air Pollution in an Urban Area—A Case Study. *Atmosphere* **2021**, *12*, 1581. [CrossRef]
9. Font, A.; Fuller, G.W. Did policies to abate atmospheric emissions from traffic have a positive effect in London? *Environ. Pollut.* **2016**, *218*, 463–474. [CrossRef] [PubMed]
10. Mukherjee, A.; McCarthy, M.C.; Brown, S.G.; Huang, S.; Landsberg, K.; Eisinger, D.S. Influence of roadway emissions on near-road PM 2.5: Monitoring data analysis and implications. *Transp. Res. Part D Transp. Environ.* **2020**, *86*, 102442. [CrossRef]
11. Sofia, D.; Gioiella, F.; Lotrecchian, N.; Giuliano, A. Mitigation strategies for reducing air pollution. *Environ. Sci. Pollut. Res.* **2020**, *27*, 19226–19235. [CrossRef] [PubMed]
12. Jacobson, M.Z. Short-term effects of agriculture on air pollution and climate in California. *J. Geophys. Res.* **2008**, *113*, D23101. [CrossRef]
13. US Environmental Protection Agency. Available online: <https://www.epa.gov/ghgemissions/inventory-us-greenhouse-gas-emissions-and-sinks> (accessed on 28 August 2023).
14. Rastogi, M.; Shalini, S.; Pathak, H. Emission of carbon dioxide from soil. *Curr. Sci.* **2002**, *82*, 510–517. Available online: <https://www.jstor.org/stable/24105957> (accessed on 16 January 2024).
15. Pan, S.Y.; He, K.H.; Lin, K.T.; Fan, C.; Chang, C.T. Addressing nitrogenous gases from croplands toward low-emission agriculture. *Clim. Atmos. Sci.* **2022**, *5*, 43. [CrossRef]
16. IPCC. Available online: <https://www.ipcc.ch/> (accessed on 20 June 2023).
17. EUR-Lex. Available online: <https://eur-lex.europa.eu/LexUriServ/LexUriServ.do?uri=OJ:L:2009:140:0016:0062:en:PDF> (accessed on 20 June 2023).
18. BioGrace. Harmonized Calculations of Biofuel Greenhouse Gas Emissions. 2015. Available online: <http://www.biograce.net/> (accessed on 28 August 2019).
19. European Commission. Available online: <https://energy.ec.europa.eu/> (accessed on 20 June 2023).
20. Stošić, M.; Ivezić, V.; Tadić, V. Tillage Systems as a Function of Greenhouse Gas (GHG) Emission and Fuel Consumption Mitigation. *Environ. Sci. Pollut. Res.* **2021**, *28*, 16492–16503. [CrossRef] [PubMed]
21. Brankatschk, G.; Finkbeiner, M. Crop Rotations and Crop Residues Are Relevant Parameters for Agricultural Carbon Footprints. *Agron. Sustain. Dev.* **2017**, *37*, 58. [CrossRef]
22. Pereira, L.G.; Cavalett, O.; Bonomi, A.; Zhang, Y.; Warner, E.; Chum, H.L. Comparison of Biofuel Life-Cycle GHG Emissions Assessment Tools: The Case Studies of Ethanol Produced from Sugarcane, Corn, and Wheat. *Renew. Sustain. Energy Rev.* **2019**, *110*, 1–12. [CrossRef]
23. Ištoka Otković, I.; Tollazzi, T.; Šraml, M.; Varevac, D. Calibration of the Microsimulation Traffic Model Using Different Neural Network Applications. *Future Transp.* **2023**, *3*, 150–168. [CrossRef]
24. Žalac, H.; Zebec, V.; Ivezić, V.; Herman, G. Land and Water Productivity in Intercropped Systems of Walnut—Buckwheat and Walnut—Barley: A Case Study. *Sustainability* **2022**, *14*, 6096. [CrossRef]
25. Žalac, H.; Herman, G.; Ergović, L.; Jović, J.; Zebec, V.; Bubalo, A.; Ivezić, V. Ecological and Agronomic Benefits of Intercropping Maize in a Walnut Orchard—A Case Study. *Agronomy* **2023**, *13*, 77. [CrossRef]
26. Državni Zavod za Statistiku. Available online: <https://podaci.dzs.hr/2022/hr/29384> (accessed on 29 January 2024).
27. Fertilizers Europe. Available online: <https://www.fertilizerseurope.com/> (accessed on 28 August 2019).
28. Deluka-Tibljaš, A.; Ištoka Otković, I.; Campisi, T.; Šurdonja, S. Comparative Analyses of Parameters Influencing Children Pedestrian Behavior in Conflict Zones of Urban Intersections. *Safety* **2021**, *7*, 1039109. [CrossRef]
29. Sainju, U.M.; Stevens, W.B.; Caesar-Ton, T.T. Soil carbon and crop yields affected by irrigation tillage crop rotation and nitrogen fertilization. *Soil Sci. Soc. Am. J.* **2014**, *78*, 936–948. [CrossRef]
30. Xue, C.; Schulteufm, E.G.; Rossmann, A.; Schuster, R.; Koehler, P.; Mühling, K.H. Split nitrogen application improves wheat baking quality by influencing protein composition rather than concentration. *Front. Plant Sci.* **2016**, *7*, 738. [CrossRef]

31. Li, B.; Fan, C.H.; Zhang, H.; Chen, Z.Z.; Sun, L.Y.; Xiong, Z.Q. Combined effects of nitrogen fertilization and biochar on the net global warming potential greenhouse gas intensity and net ecosystem budget in intensive vegetable agriculture in Southeastern China. *Agric. Ecosyst. Environ.* **2015**, *100*, 10–19. [[CrossRef](#)]
32. Sainju, U.M. A global meta-analysis on the impact of management practices on net global warming potential and greenhouse gas intensity from cropland soils. *PLoS ONE* **2016**, *1*, e0148527. [[CrossRef](#)]
33. Ziaei, S.M.; Mazloumzadeh, S.M.; Jabbary, M. A comparison of energy use and productivity of wheat and barley. *J. Saudi Soc. Agric. Sci.* **2015**, *14*, 19–25. [[CrossRef](#)]
34. Liu, Y.N.; Li, Y.C.; Peng, Z.P.; Wang, Y.Q.; Guo, L.P.; Lin, E.D.; Xue, H. Effects of different nitrogen fertilizer management practices on wheat yields and N₂O emissions from wheat fields in North China. *J. Integr. Agric.* **2015**, *14*, 1184–1191. [[CrossRef](#)]
35. Xu, C.; Han, X.; Bol, R.; Smith, P.; Wu, W.; Meng, F. Impacts of natural factors and farming practices on greenhouse gas emissions in the North China plain: A meta-analysis. *Ecol. Evol.* **2017**, *7*, 702–6715. [[CrossRef](#)]
36. European Commission EC. *The EU Explained: Agriculture the EU's Common Agricultural Policy (CAP): For Our Food for Our Countryside for Our Environment*; Publications Office of the European Union: Luxembourg, 2017; p. 16. [[CrossRef](#)]
37. World Health Organization. Available online: <https://www.who.int/about/policies> (accessed on 9 April 2020).
38. Carslaw, D.C. Evidence of an increasing NO₂/NOX emissions ratio from road traffic emissions. *Atmos. Environ.* **2005**, *39*, 4793–4802. [[CrossRef](#)]
39. Beevers, S.D.; Westmoreland, E.; de Jong, M.C.; Williams, M.L.; Carslaw, D.C. Trends in NO_x and NO₂ emissions from road traffic in Great Britain. *Atmos. Environ.* **2012**, *54*, 107–116. [[CrossRef](#)]
40. Dai, J.; Alvarado, R.; Ali, S.; Ahmed, Z.; Meo, M.S. Transport infrastructure, economic growth, and transport CO₂ emissions nexus: Does green energy consumption in the transport sector matter? *Environ. Sci. Pollut. Res.* **2023**, *30*, 40094–40106. [[CrossRef](#)]
41. Zhang, S.; Peng, D.; Li, Y.; Zu, L.; Fu, M.; Yin, H.; Ding, Y. Study on the real-world emissions of rural vehicles on different road types. *Environ. Pollut.* **2021**, *273*, 116453. [[CrossRef](#)] [[PubMed](#)]

Disclaimer/Publisher's Note: The statements, opinions and data contained in all publications are solely those of the individual author(s) and contributor(s) and not of MDPI and/or the editor(s). MDPI and/or the editor(s) disclaim responsibility for any injury to people or property resulting from any ideas, methods, instructions or products referred to in the content.